



**DESCRIPTION**

**PAGE**

**Locknuts**

ESNA® Light Hex Nuts	8-1 to 8-2
FLEXLOC® Self-Locking Nuts	8-3 to 8-4
Prevailing-Torque Type Steel Hex and Hex Flange Nuts	8-5 to 8-6
ANCO Self-Locking Nuts	8-7



ESNA® LIGHT HEX NUTS

ANSI B 18.2.1, MS17922, MS17930, MS20045, MS21044, NAS1021

THREAD SIZE	ESNA PART NUMBER	MATERIAL & FINISH	ULTIMATE TENSILE STRENGTH LB MIN	APPROX WEIGHT LB/100	THREAD	A	B	C	L
#10	22NM-20	STEEL-CADMIUM	2,460	.50	1.900-32UNF-38				
	22NM-20	STEEL-UNPLATED	2,460	.50	1.900-32UNF-38				
	22NM-20	ALUMINUM-ANODIZED	1,270	.18	1.900-32UNF-38				
	22NM-20	STAINLESS-UNPLATED	3,460	.55	1.900-32UNF-38	.249 - .229	.376 - .367	.410	.140
	22NM-20	BRASS-CADMIUM							
	22NM-20	BRASS-BRIGHT NICKEL							
	22NM-20	BRASS-UNPLATED							
	22NM-20	STEEL-CADMIUM	2,100	.50	1.900-32UNF-38				
	22NM-20	STEEL-UNPLATED	1,800	.18	1.900-32UNF-38				
	22NM-20	ALUMINUM-ANODIZED	2,010	.50	1.900-32UNF-38				
	22NM-20	STAINLESS-UNPLATED	2,910	.55	1.900-32UNF-38				
	#12	22NM-24	STEEL-CADMIUM	2,900	.92	2.160-24UNC-38	.328 - .298	.497 - .490	.482
22NM-24		STEEL-UNPLATED	3,100	.90	2.160-24UNC-38				
22NM-24		ALUMINUM-ANODIZED	1,760	.37	2.160-24UNC-38				
22NM-24		STAINLESS-UNPLATED	3,760	.90	2.160-24UNC-38				
22NM-24		BRASS-CADMIUM							
22NM-24		BRASS-BRIGHT NICKEL							
22NM-24		BRASS-UNPLATED							
22NM-24		STEEL-CADMIUM	2,900	.90	2.160-24UNC-38				
22NM-24		STEEL-UNPLATED	2,770	.90	2.160-24UNC-38				
22NM-24		ALUMINUM-ANODIZED	4,580	.90	2.160-24UNC-38				
22NM-24		STAINLESS-UNPLATED	4,580	.90	2.160-24UNC-38				
1/4		22NM-28	STEEL-CADMIUM	3,760	1.20	2.500-20UNC-28	.328 - .298	.430	.482
	22NM-28	STEEL-UNPLATED	4,580	1.20	2.500-20UNC-28				
	22NM-28	ALUMINUM-ANODIZED	2,770	.90	2.500-20UNC-28				
	22NM-28	STAINLESS-UNPLATED	7,390	1.20	2.500-20UNC-28				
	22NM-28	BRASS-CADMIUM							
	22NM-28	BRASS-BRIGHT NICKEL							
	22NM-28	BRASS-UNPLATED							
	22NM-28	STEEL-CADMIUM	2,900	1.20	2.500-20UNC-28				
	22NM-28	STEEL-UNPLATED	2,770	1.20	2.500-20UNC-28				
	22NM-28	ALUMINUM-ANODIZED	4,580	1.20	2.500-20UNC-28				
	22NM-28	STAINLESS-UNPLATED	4,580	1.20	2.500-20UNC-28				
	5/16	22NM-32	STEEL-CADMIUM	4,580	1.80	3.125-16UNC-28	.389 - .329	.502 - .492	.552
22NM-32		STEEL-UNPLATED	7,390	1.80	3.125-16UNC-28				
22NM-32		ALUMINUM-ANODIZED	2,770	1.20	3.125-16UNC-28				
22NM-32		STAINLESS-UNPLATED	7,390	1.80	3.125-16UNC-28				
22NM-32		BRASS-CADMIUM							
22NM-32		BRASS-BRIGHT NICKEL							
22NM-32		BRASS-UNPLATED							
22NM-32		STEEL-CADMIUM	2,900	1.80	3.125-16UNC-28				
22NM-32		STEEL-UNPLATED	2,770	1.80	3.125-16UNC-28				
22NM-32		ALUMINUM-ANODIZED	4,580	1.80	3.125-16UNC-28				
22NM-32		STAINLESS-UNPLATED	4,580	1.80	3.125-16UNC-28				
3/8		22NM-36	STEEL-CADMIUM	5,480	2.50	3.750-12UNC-28	.468 - .438	.564 - .553	.622
	22NM-36	STEEL-UNPLATED	7,390	2.50	3.750-12UNC-28				
	22NM-36	ALUMINUM-ANODIZED	2,770	1.80	3.750-12UNC-28				
	22NM-36	STAINLESS-UNPLATED	7,390	2.50	3.750-12UNC-28				
	22NM-36	BRASS-CADMIUM							
	22NM-36	BRASS-BRIGHT NICKEL							
	22NM-36	BRASS-UNPLATED							
	22NM-36	STEEL-CADMIUM	2,900	2.50	3.750-12UNC-28				
	22NM-36	STEEL-UNPLATED	2,770	2.50	3.750-12UNC-28				
	22NM-36	ALUMINUM-ANODIZED	4,580	2.50	3.750-12UNC-28				
	22NM-36	STAINLESS-UNPLATED	4,580	2.50	3.750-12UNC-28				
	7/16	22NM-40	STEEL-CADMIUM	7,390	3.30	4.375-10UNC-28	.468 - .438	.564 - .553	.622
22NM-40		STEEL-UNPLATED	7,390	3.30	4.375-10UNC-28				
22NM-40		ALUMINUM-ANODIZED	2,770	1.80	4.375-10UNC-28				
22NM-40		STAINLESS-UNPLATED	7,390	3.30	4.375-10UNC-28				
22NM-40		BRASS-CADMIUM							
22NM-40		BRASS-BRIGHT NICKEL							
22NM-40		BRASS-UNPLATED							
22NM-40		STEEL-CADMIUM	2,900	3.30	4.375-10UNC-28				
22NM-40		STEEL-UNPLATED	2,770	3.30	4.375-10UNC-28				
22NM-40		ALUMINUM-ANODIZED	4,580	3.30	4.375-10UNC-28				
22NM-40		STAINLESS-UNPLATED	4,580	3.30	4.375-10UNC-28				

INDICATES ITEMS SUBJECT TO MINIMUM ORDER QUANTITIES IF NOT AVAILABLE FROM STOCK. TOLERANCES UNLESS OTHERWISE SPECIFIED: DECIMALS - .015 INCHES; 2" - 100 NOT SCALE.

ESNA DIVISION  
American Cyanamid Company  
Lancaster, PA 17602

**NUT-HEX, LIGHT**

PH 2400 & 2515  
CORP IDENT. NO. 7296  
**NM-NE**  
PAGE 1 OF 2

ANSI B 18.2.1, MS17922, MS17930, MS20045, MS21044, NAS1021

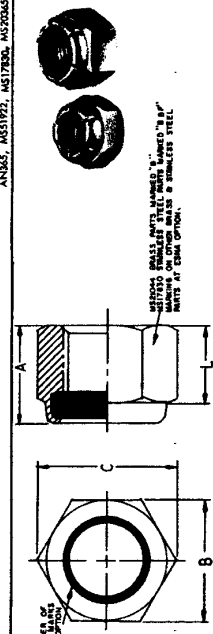
THREAD SIZE	ESNA PART NUMBER	MATERIAL & FINISH	ULTIMATE TENSILE STRENGTH LB MIN	APPROX WEIGHT LB/100	THREAD	A	B	C	L
#1	22NM-12	STEEL-CADMIUM	2,460	.14	.070-72UNF-38	.153 - .133	.251 - .243	.268	.081
	22NM-12	STEEL-UNPLATED	2,460	.14	.070-72UNF-38				
	22NM-12	ALUMINUM-ANODIZED	1,270	.05	.070-72UNF-38				
#2	22NM-16	STEEL-CADMIUM	440	.14	.080-56UNC-38	.153 - .133	.251 - .243	.268	.081
	22NM-16	STEEL-UNPLATED	440	.14	.080-56UNC-38				
	22NM-16	ALUMINUM-ANODIZED	1,270	.05	.080-56UNC-38				
#3	22NM-20	STEEL-CADMIUM	790	.14	.090-48UNC-38	.153 - .133	.251 - .243	.268	.081
	22NM-20	STEEL-UNPLATED	790	.14	.090-48UNC-38				
	22NM-20	ALUMINUM-ANODIZED	1,270	.05	.090-48UNC-38				
#4	22NM-24	STEEL-CADMIUM	1,100	.14	.110-40UNC-38	.153 - .133	.251 - .243	.268	.081
	22NM-24	STEEL-UNPLATED	1,100	.14	.110-40UNC-38				
	22NM-24	ALUMINUM-ANODIZED	1,270	.05	.110-40UNC-38				
#5	22NM-28	STEEL-CADMIUM	1,280	.26	.130-40UNC-38	.153 - .133	.251 - .243	.268	.081
	22NM-28	STEEL-UNPLATED	1,280	.26	.130-40UNC-38				
	22NM-28	ALUMINUM-ANODIZED	1,270	.05	.130-40UNC-38				
#6	22NM-32	STEEL-CADMIUM	1,100	.26	.130-32UNC-38	.186 - .166	.313 - .300	.339	.100
	22NM-32	STEEL-UNPLATED	1,100	.26	.130-32UNC-38				
	22NM-32	ALUMINUM-ANODIZED	1,270	.05	.130-32UNC-38				
#8	22NM-40	STEEL-CADMIUM	1,720	.42	.160-32UNC-38	.239 - .219	.345 - .336	.374	.140
	22NM-40	STEEL-UNPLATED	1,720	.42	.160-32UNC-38				
	22NM-40	ALUMINUM-ANODIZED	1,270	.05	.160-32UNC-38				
#10	22NM-48	STEEL-CADMIUM	1,850	.42	.160-24UNC-38				
	22NM-48	STEEL-UNPLATED	1,850	.42	.160-24UNC-38				
	22NM-48	ALUMINUM-ANODIZED	1,270	.05	.160-24UNC-38				

INDICATES ITEMS SUBJECT TO MINIMUM ORDER QUANTITIES IF NOT AVAILABLE FROM STOCK. TOLERANCES UNLESS OTHERWISE SPECIFIED: DECIMALS - .015 INCHES; 2" - 100 NOT SCALE.

ESNA DIVISION  
American Cyanamid Company  
Lancaster, PA 17602

**NUT-HEX, LIGHT**

PH 2400 & 2515  
CORP IDENT. NO. 7296  
**NM-NE**  
PAGE 1 OF 2





ESNA® LIGHT HEX NUTS (Continued)

ANSI B 18.2.1, MS1922, MS1780, MS2035, MS104, NA1021

THREAD SIZE	ESNA PART NUMBER	MATERIAL & FINISH	ULTIMATE TENSILE STRENGTH 18 MIN	APPROX WEIGHT LB/100	THREAD	A	B	C	L
1 1/8	49NE-182	STEEL-ZINC	116,700	41.00	1.1250-18UNF-38	1.203 - 1.141	1.437 - 1.414	1.826	.930
	49NE-182	STEEL-CADMIUM	116,700	41.00	1.1250-18UNF-38	1.203 - 1.141	1.437 - 1.414	1.826	.930
	49NE-202	STEEL-ZINC	98.00	36.00	1.2500-18UNF-38	1.422 - 1.360	1.819 - 1.801	2.008	1.125
1 1/4	49NE-202	STEEL-ZINC	147,940	77.00	1.2500-18UNF-38	1.422 - 1.360	1.819 - 1.801	2.008	1.125
	49NE-202	STEEL-CADMIUM	147,940	77.00	1.2500-18UNF-38	1.422 - 1.360	1.819 - 1.801	2.008	1.125
	49NE-222	STEEL-ZINC	100.00	100.00	1.3750-18UNF-38	1.609 - 1.547	2.008 - 1.973	2.332	1.282
1 1/2	49NE-222	STEEL-ZINC	100.00	100.00	1.5000-18UNF-38	1.640 - 1.578	2.197 - 2.159	2.444	1.313
	49NE-222	STEEL-CADMIUM	100.00	100.00	1.5000-18UNF-38	1.640 - 1.578	2.197 - 2.159	2.444	1.313
	49NE-242	STEEL-ZINC	100.00	100.00	1.5000-18UNF-38	1.640 - 1.578	2.197 - 2.159	2.444	1.313

ⓐ INDICATES ITEMS SUBJECT TO MINIMUM ORDER QUANTITIES IF NOT AVAILABLE FROM STOCK.

MATERIAL:  
 \*1\* STEEL  
 \*2\* ALUMINUM ALLOY - 6061 OF EQUIV.  
 \*3\* STAINLESS STEEL A16-100 OF EQUIV.  
 \*4\* BRASS - COMMERCIAL HALF HARD OR EQUIV.

FINISH:  
 \*1\* ZINC PLATE, QQ-Z-395, TYPE I, CLASS 3.  
 \*2\* CADMIUM PLATE, QQ-P-416, TYPE 1, CLASS 3.  
 \*3\* BRASS PLATE, QQ-B-359, TYPE 1, CLASS 3.  
 \*4\* ANODIZED, MIL-PRF-888.  
 \*5\* UNPLATED.

LOCKING INSERT: ED NYLON. (28PF MAX PERFORMANCE).  
 THREADS: MIL-S-8879 OR MIL-S-7742.  
 THREAD SQUARENESS: ESNA SPEC 405, GROUP 1.  
 PERFORMANCE/APPROVAL STATUS: MIL-N-25027 AS APPLICABLE.

NOTE: 1. ESNA IS CONVERTING ALL NICKEL PLATE PROCESSING TO BRIGHT ORNAMENTAL, WHEREAS PREVIOUSLY BOTH NON-ORNAMENTAL BRIGHT AND ORNAMENTAL BRIGHT FINISHES WERE AVAILABLE. THE EQUIVALENT PART NUMBER FOR ORNAMENTAL NICKEL FINISH IS 79NN-42. AT SUCH TIME AS EXISTING STOCK OF NON-ORNAMENTAL \*4\* FINISH CODE PARTS IS EXHAUSTED, ESNA WILL AUTOMATICALLY SUBSTITUTE BRIGHT ORNAMENTAL NICKEL AT NO INCREASE IN PRICE. IN THESE INSTANCES OF SUBSTITUTION, ESNA WILL SHIP UNDER THE PREVIOUS \*4\* FINISH CODE NUMBER.

ESNA DIVISION  
American Fasteners  
Union, New Jersey 07081

ISSUED 8 AUG 82 REVISED 17 APR 80

P1-2400 & 2515  
CODE IDENT. NO. 12843  
NUT-HEX, LIGHT  
PAGE 3 OF 4

ANSI B 18.2.1, MS1922, MS1780, MS2035, MS104, NA1021

THREAD SIZE	ESNA PART NUMBER	MATERIAL & FINISH	ULTIMATE TENSILE STRENGTH 18 MIN	APPROX WEIGHT LB/100	THREAD	A	B	C	L
7/16	49NE-070U	STEEL-CADMIUM	116,450	3.10	4975-20UNF-38	.468 - .438	.679 - .676	.746	.324
	49NE-070U	ALUMINUM ANODIZED	77,460	1.10	4975-20UNF-38	.468 - .438	.679 - .676	.746	.324
	49NE-074	STEEL-ZINC	2.30	2.30	4975-14UNJ-C-38	.637 - .616	.698	.765	.324
1/2	49NE-074	STEEL-CADMIUM	13,140	3.10	4975-14UNJ-C-38	.637 - .616	.698	.765	.324
	49NE-074	STAINLESS-UNPLATED	13,140	3.10	4975-14UNJ-C-38	.637 - .616	.698	.765	.324
	49NE-074U	STEEL-CADMIUM	13,140	3.10	4975-14UNJ-C-38	.637 - .616	.698	.765	.324
5/8	49NE-080	STEEL-ZINC	21,110	4.30	5000-20UNF-38	.695 - .679	.741	.837	.464
	49NE-080	STEEL-CADMIUM	21,110	4.30	5000-20UNF-38	.695 - .679	.741	.837	.464
	49NE-080	STAINLESS-UNPLATED	21,110	4.30	5000-20UNF-38	.695 - .679	.741	.837	.464
9/16	49NE-080	STEEL-ZINC	24,810	7.10	5000-18UNJ-C-38	.877 - .845	.978	1.051	.593
	49NE-080	STEEL-CADMIUM	24,810	7.10	5000-18UNJ-C-38	.877 - .845	.978	1.051	.593
	49NE-080	STAINLESS-UNPLATED	24,810	7.10	5000-18UNJ-C-38	.877 - .845	.978	1.051	.593
3/4	49NE-100	STEEL-ZINC	28,530	8.30	6350-11UNJ-C-38	.765 - .735	.940 - .978	1.051	.593
	49NE-100	STEEL-CADMIUM	28,530	8.30	6350-11UNJ-C-38	.765 - .735	.940 - .978	1.051	.593
	49NE-100	STAINLESS-UNPLATED	28,530	8.30	6350-11UNJ-C-38	.765 - .735	.940 - .978	1.051	.593
7/8	49NE-120	STEEL-ZINC	31,130	12.00	6850-10UNF-38	.999 - .969	1.232 - 1.239	1.403	.790
	49NE-120	STEEL-CADMIUM	31,130	12.00	6850-10UNF-38	.999 - .969	1.232 - 1.239	1.403	.790
	49NE-120	STAINLESS-UNPLATED	31,130	12.00	6850-10UNF-38	.999 - .969	1.232 - 1.239	1.403	.790
1	49NE-140	STEEL-ZINC	37,980	27.00	7500-8UNJ-C-38	1.078 - 1.016	1.460 - 1.437	1.615	.825
	49NE-140	STEEL-CADMIUM	37,980	27.00	7500-8UNJ-C-38	1.078 - 1.016	1.460 - 1.437	1.615	.825
	49NE-140	STAINLESS-UNPLATED	37,980	27.00	7500-8UNJ-C-38	1.078 - 1.016	1.460 - 1.437	1.615	.825

ⓐ INDICATES ITEMS SUBJECT TO MINIMUM ORDER QUANTITIES IF NOT AVAILABLE FROM STOCK.

MATERIAL:  
 \*1\* STEEL  
 \*2\* ALUMINUM ALLOY - 6061 OF EQUIV.  
 \*3\* STAINLESS STEEL A16-100 OF EQUIV.  
 \*4\* BRASS - COMMERCIAL HALF HARD OR EQUIV.

FINISH:  
 \*1\* ZINC PLATE, QQ-Z-395, TYPE I, CLASS 3.  
 \*2\* CADMIUM PLATE, QQ-P-416, TYPE 1, CLASS 3.  
 \*3\* BRASS PLATE, QQ-B-359, TYPE 1, CLASS 3.  
 \*4\* ANODIZED, MIL-PRF-888.  
 \*5\* UNPLATED.

LOCKING INSERT: ED NYLON. (28PF MAX PERFORMANCE).  
 THREADS: MIL-S-8879 OR MIL-S-7742.  
 THREAD SQUARENESS: ESNA SPEC 405, GROUP 1.  
 PERFORMANCE/APPROVAL STATUS: MIL-N-25027 AS APPLICABLE.

NOTE: 1. ESNA IS CONVERTING ALL NICKEL PLATE PROCESSING TO BRIGHT ORNAMENTAL, WHEREAS PREVIOUSLY BOTH NON-ORNAMENTAL BRIGHT AND ORNAMENTAL BRIGHT FINISHES WERE AVAILABLE. THE EQUIVALENT PART NUMBER FOR ORNAMENTAL NICKEL FINISH IS 79NN-42. AT SUCH TIME AS EXISTING STOCK OF NON-ORNAMENTAL \*4\* FINISH CODE PARTS IS EXHAUSTED, ESNA WILL AUTOMATICALLY SUBSTITUTE BRIGHT ORNAMENTAL NICKEL AT NO INCREASE IN PRICE. IN THESE INSTANCES OF SUBSTITUTION, ESNA WILL SHIP UNDER THE PREVIOUS \*4\* FINISH CODE NUMBER.

ESNA DIVISION  
American Fasteners  
Union, New Jersey 07081

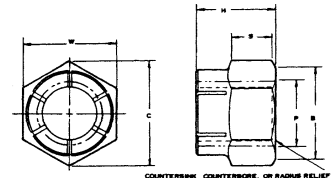
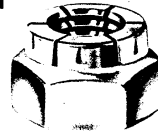
ISSUED 8 AUG 82 REVISED 17 APR 80

P1-2400 & 2515  
CODE IDENT. NO. 12843  
NUT-HEX, LIGHT  
PAGE 3 OF 4



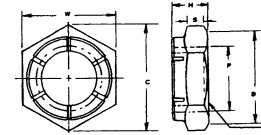
## FLEXLOC® SELF-LOCKING NUTS

**FULL HEIGHT**  
(FA, FC, FAF)



COUNTERBORE, COUNTERBORE, OR RADIUS RELIEF TO THREAD WITH THE LIMITS OF "P" DIAMETER.

**THIN HEIGHT**  
(FK, FKF)



COUNTERBORE, COUNTERBORE, OR RADIUS RELIEF TO THREAD WITH THE LIMITS OF "P" DIAMETER.

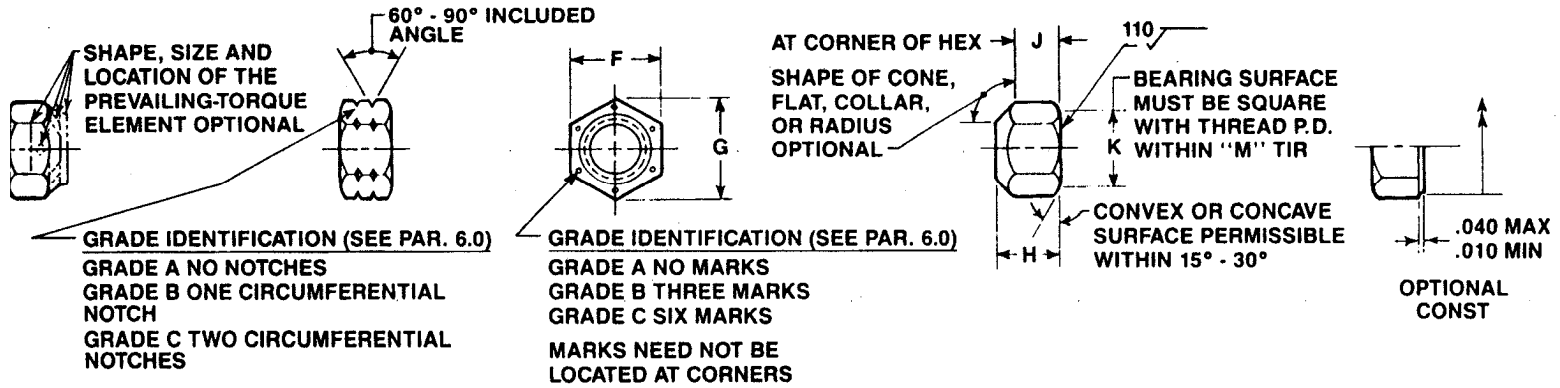
Size	Nut Diam	Thrds <sup>o</sup> per in.	Type		Dash No.	Dimensions								
			Full Ht.	Thin Ht.		B Diam	C	P Diam	H max		S min		W	
									Min	Min	Max	Full Ht.	Thin Ht.	Full Ht.
#2	.086	56 UNC	FA		256	.243	.277	.129	.155	---	.050	---	.251	.243
#3	.099	48 UNC	FA		348	.243	.277	.142	.155	---	.050	---	.251	.243
#4	.112	40 UNC	FA		440	.243	.277	.155	.155	---	.050	---	.251	.243
		48 UNF	FC	FK	448									
#5	.125	40 UNC	FA	FK	540	.243	.277	.168	.155	---	.052	---	.251	.243
		44 UNF	FC	FK	544									
#6	.138	32 UNC	FA	FK	632	.305	.347	.181	.180	.141	.075	.036	.313	.305
		40 UNF	FC	FK	640									
#8	.164	32 UNC	FA	FK	832	.336	.383	.208	.243	.188	.105	.070	.345	.336
		36 UNF	FC	FK	836									
#10	.190	24 UNC	FA	FK	1024	.367	.419	.230	.243	.188	.085	.065	.376	.367
		32 UNF	FC	FK	1032									
#12	.216	24 UNC	FA	FKF	1224	.430	.491	.258	.290	.209	.122	.071	.439	.430
		28 UNF	FC	FK	1228									
1/4	.250	20 UNC	FA	FKF	420	.430	.491	.293	.290	.219	.122	.075	.439	.430
		28 UNF	FC	FK	428									
5/16	.312	18 UNC	FAF	FKF	518	.492	.561	.356	.353	.266	.150	.097	.502	.492
		24 UNF	FC	FK	524									
3/8	.375	16 UNC	FAF	FKF	616	.553	.631	.418	.462	.282	.210	.108	.564	.553
		24 UNF	FC	FK	624									
7/16	.437	14 UNC	FAF	FKF	714	.616	.703	.487	.462	.328	.210	.138	.627	.616
		20 UNF	FC	FK	720									
		20 UNF	FC	FK	720									
		20 UNF	FC	FK	UN									
1/2	.500	13	FAF	FKF	813	.741	.846	.551	.602	.328	.285	.121	.752	.741



Size	Nut Diam	Thrds° per in.	Type		Dash No.	Dimensions								
			Full Ht.	Thin Ht.		B Diam	C	P Diam	H max		S min		W	
						Min	Min	Max	Full Ht.	Thin Ht.	Full Ht.	Thin Ht.	Max	Min
		UNC 20 UNF	FC	FK	820									
9/16	.562	12 UNC 18 UNF	FA FC	FKF FK	912 918	.865	.987	.614	.571 .696	.368	.260 .385	.135	.877	.865
5/8	.625	11 UNC 18 UNF	FAF FC	FKF FK	1011 1018	.928	1.059	.676	.759	.399	.410	.147	.940	.928
3/4	.750	10 UNC 16 UNF	FAF FC	FKF FK	1210 1216	1.052	1.200	.807	.884	.415	.505	.155	1.064	1.052
7/8	.875	9 UNC 14 UNF	FAF FC	FKF FK	1409 1414	1.239	1.414	.938	1.009	.477	.570	.166	1.252	1.239
1	1.000	8 UNC 12 UNF 14 NS	FAF FC FC	FKF FK FK	1608 1612 1614	1.427	1.628	1.064	1.134	.571	.635	.218	1.440	1.427
1- 1/8	1.125	12 UNF	FC	FK	1812	1.614	1.842	1.191	1.259	.634	.710	.238	1.627	1.614
1- 1/4	1.250	12 UNF	FC		2012	1.801	2.056	1.315	1.446	.759	.795	.311	1.814	1.801
1- 3/8	1.375	12 UNF	FC		2212	1.988	2.269	1.440	1.509	.821	0.815	.325	2.002	1.988
1- 1/2	1.500	12 UNF	FC		2412	2.176	2.484	1.565	1.759	.884	.970	.350	2.190	2.176
1- 3/4	1.750	12 UN	FC		2812	2.787	2.980	1.815	2.010	---	1.124	---	2.752	2.737
2	2.000	12 UN	FC		3212	3.112	3.267	2.065	3.260	---	1.260	---	3.127	3.112



## PREVAILING-TORQUE TYPE STEEL HEX AND HEX FLANGE NUTS

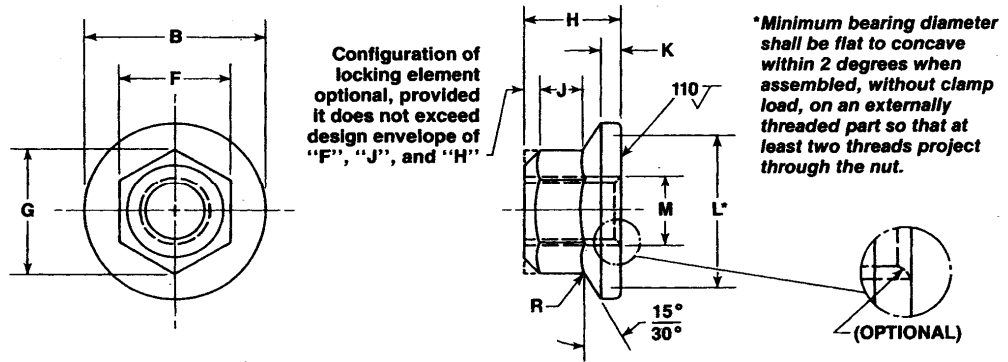


**Dimensions of Prevailing-Torque Type Hex Nuts**

Nominal Size or Basic Major Diam of Thread		Width Across Flats			Width Across Corners		Thickness			Height of Hex	Diam of Bearing Surface		Angularity of Bearing Surface FIM
							Top Insert Type	All Metal Type	Both Types				
		F			G		H	H	H	J	K		M
		Basic	Max	Min	Max	Min	Max	Max	Min	Min	Max	Min	Max
No. 4	0.1120	1/4	0.251	0.241	0.289	0.275	0.163	0.163	0.087	0.066	0.251	0.238	0.008
No. 6	0.1380	5/16	.313	.302	.361	.344	.188	.171	.102	.075	.313	.297	.008
No. 8	0.1640	11/32	.345	.332	.397	.378	.239	.191	.117	.083	.345	.328	.009
No. 10	0.1900	3/8	.376	.362	.433	.413	.249	.241	.117	.083	.376	.357	.009
No. 12	0.2160	7/16	.438	.423	.505	.482	.328	.241	.148	.103	.438	.416	.010
1/4	0.2500	7/16	.4385	.428	.505	.488	.328	.288	.212	.145	.438	.416	.010
5/16	0.3125	1/2	.5020	.489	.577	.557	.359	.336	.258	.166	.502	.475	.011
3/8	0.3750	9/16	.5645	.551	.650	.628	.469	.415	.320	.198	.564	.534	.012
7/16	0.4375	11/16	.6895	.675	.794	.768	.524	.463	.365	.223	.689	.653	.013
1/2	0.5000	3/4	.7520	.736	.866	.840	.609	.573	.427	.262	.752	.712	.014
9/16	0.5625	7/8	.8770	.861	1.010	.982	.656	.621	.473	.286	.877	.830	.015
5/8	0.6250	15/16	.9395	.922	1.083	1.051	.765	.731	.535	.329	.939	.890	.016
3/4	0.7500	1-1/8	1.1270	1.088	1.299	1.240	.890	.827	.617	.382	1.127	1.069	.018
7/8	0.8750	1-5/16	1.3145	1.269	1.516	1.447	.999	.922	.724	.450	1.314	1.246	.020
1	1.0000	1-1/2	1.5020	1.450	1.732	1.653	1.124	1.018	.831	.513	1.502	1.425	.022
1-1/8	1.1250	1-11/16	1.6895	1.631	1.949	1.859	1.281	1.176	.939	.576	1.689	1.603	.025
1-1/4	1.2500	1-7/8	1.8770	1.812	2.165	2.066	1.422	1.272	1.030	.628	1.877	1.781	.028
1-3/8	1.3750	2-1/16	2.0645	1.994	2.382	2.273	1.609	1.399	1.138	.681	2.064	1.959	.031
1-1/2	1.5000	2-1/4	2.2520	2.175	2.598	2.480	1.671	1.526	1.245	.757	2.252	2.138	.034



### PREVAILING-TORQUE TYPE STEEL HEX AND HEX FLANGE NUTS



**Dimensions of Prevailing-Torque Type Hex Flange Nuts**

Nominal Size of Basic Major Diam of Thread	Width Across Flats			Width Across Corners		Height	Flange Diam	Bearing Diam	Flange Thickness	Corner Wrenching Length	Counter-sink Diam	Angularity of Brg. Surf. w/ Thrd PD FIM	Flange Top Radius
	F			G		H	B	L	K	J	M		R
	Basic	Max	Min	Max	Min	Max	Max	Min	Min	Min	Max		Max
1/4 0.2500	7/16	0.4385	0.428	0.505	0.488	0.300	0.560	0.484	0.04	0.14	0.295	0.011	0.01
5/16 0.3125	1/2	0.5020	0.489	0.577	0.557	0.365	0.680	0.602	0.05	0.17	0.357	0.013	0.01
3/8 0.3750	9/16	0.5645	0.551	0.650	0.628	0.425	0.810	0.730	0.06	0.20	0.420	0.015	0.02
7/16 0.4375	11/16	0.6895	0.675	0.794	0.768	0.495	0.930	0.846	0.07	0.23	0.482	0.016	0.02
1/2 0.5000	3/4	0.7520	0.736	0.866	0.840	0.555	1.070	0.982	0.08	0.26	0.560	0.018	0.02
9/16 0.5625	7/8	0.8770	0.861	1.010	.982	0.625	1.190	0.101	0.09	0.29	0.622	0.019	0.03
5/8 .06250	15/16	0.9395	0.922	1.083	1.051	0.690	1.330	1.230	0.10	0.32	0.685	0.021	0.03
3/4 0.7500	1-1/8	1.1270	1.088	1.299	1.240	0.825	1.585	1.472	0.11	0.38	0.810	0.023	0.03



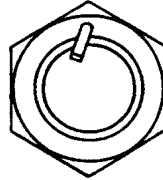
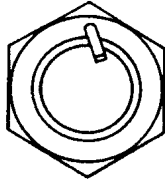
**ANCO SELF LOCKING NUTS  
ASTM A563 GRADE A**



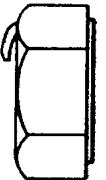
Washer Faced



Double Chamfered



Double Chamfered



Washer Faced

Hex				
Size	Net Price per 100 Pcs	Net Weight per 100 Pcs	Container	
			Qty	Net Wt
In.	\$	Lb	Pcs	Lb
1/4	12.60	.7	9000	66
5/16	12.80	1.0	6000	66
3/8	12.80	1.5	4000	64
1/2	15.05	3.6	1800	67
5/8	21.60	6.9	800	58
3/4	24.85	11.9	500	59
7/8	31.35	19.0	300	57
1	54.30	28.3	190	56

Heavy Hex					
Size	Net Price per 100 Pcs	Net Weight per 100 Pcs	Container		Pitch
			Qty	Net Wt	Thrds per In.
In.	\$	Lb	Pcs	Lb	Coarse
1/4	13.45	1.1	5500	64	20
5/16	13.75	1.6	3700	63	18
3/8	14.50	3.0	2000	63	16
1/2	16.95	6.5	1000	65	13
5/8	23.40	11.9	540	64	11
3/4	28.30	18.6	340	65	10
7/8	43.90	29.2	220	65	9
1	72.70	42.5	150	64	8
1-1/8	156.95	59.2	100	59	7
1-1/4	173.35	78.6	75	59	7
1-1/2	233.55	131.0	40	52	6



